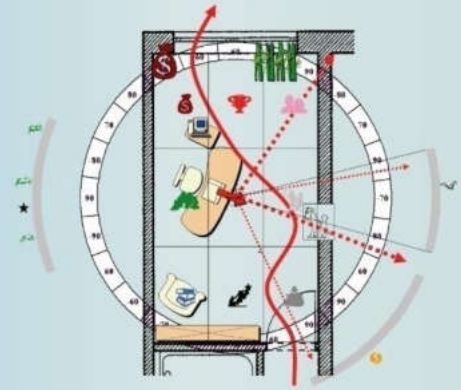


fengshuiPC



Michael Rapp, Balanstrasse 19, D-81669 Munich, Tel: +49 (089) 6886812 mail@fengshuiPC.de

“Feng Shui has been recognized as a planning tool even at large scale projects in the East for a long time but now also in Europe and the US. Large corporations are using Feng Shui as a means to improve their workplace and to strengthen their competitiveness. Therefore Feng Shui consultations are now regarded as “standard” business services and are expected to adjust to the business environment in terms of professional presentation and fee calculation. The professional Feng Shui consultant requires today a tool to produce high end presentations and reports as well as reliable results in a very short timeframe.”

fengshuiPC is the outstanding Feng Shui software to proof your competence as a consultant. Building upon the calculation engine of Microsoft Excel the program is user friendly and fits seamlessly into the office family. It offers three overwhelming advantages:

- reliable results within minutes after entry of data;
- professional presentation of the results – especially effective by using scanned floor plans from the client;
- deeper analysis through faster review of alternatives as well as through a simultaneous view of all influencing factors on one floor plan. It uncovers connections which would have been lost without use of the program.

The software offers many different tools to the Feng Shui consultant. After importing scanned floor plans the program calculates the center of gravity and places the plan on selected sheets for analysis and presentation. There the consultant finds all information about Bazhai, Flying Stars and the Bagua right on the plan, either displayed in pie chart or rectangular shape. Even the dangers of the year – grand Duke, 3 Shares and the Yellow 5 are displayed exact to the degree and for the next 10 years.

All information is dynamic and adjusts instantly to any changes. Using a step by step guidance, even the inexperienced user can produce astonishing analysis directly on the plan. Any step can immediately see and adjusted.

The Feng Shui font adds great value, as it can be used with any program offering Chinese characters, trigram symbols, animals and much more.



Excel 2007 users can even access any text in the program and adjust to their individual liking or translate.

The user is supported by a 75 page user guide with 150 pictures. FengshuiPC offers also 2 day introductory courses in Germany, Switzerland and Austria.

fengshuiPC offers:

- Full version of fengshuiPC Version 4.0
- Update fengshuiPC version 4 from previous version 3
- The Feng Shui program requires an installed version of Microsoft Excel 2007-2013, Excel 2011 doe MAC.

Please inquire about pricing

Introductory courses in many European cities during 2008:

Cologne, Berlin, Munich, Heidelberg, Hamburg, Zurich, Vienna, planned in 2009 in NYC

Door direction for Bazhai System

According to the Bazhai System - also known as the East / West Group System - the compass direction of the front door determines the constant energy qualities of the eight 45° sectors or trigrams. With the input direction of 0°, the house has its sitting position in the South sector. It belongs to the trigram Li - 9 and is part of the East - Group. The trigrams show the internal energy potential of the various parts of the house. The more accurate direction, according to the 24 mountains, is situated in the sector of Cher, N2 352,5°-7,5°. The floor plan is displayed with 180° - South pointing to the top of the page.

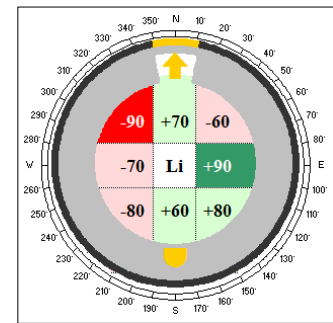
Compass direction of house plan on top
 Consultation of: **House Berger**

Facing for Flying Stars
 Birth year of the house:
 Use of replacement Stars

The Xuan Kong Fei Xing System - also known as Flying Stars - represents the time dimension of the Feng Shui. The facing is determined mainly by those factors of the environment which favor the incoming Qi. The measured direction of 90° belongs to the 15° sector Mau, E2 82,5°-97,5°. The "birth year" of the house is 2004; it belongs to the 8th 20-year circle; This determines the number 8 in the center of the grid. The energy potential for a house of the period 8 in the current period 8 is the highest. The flying stars of this direction are calculated without replacement stars.

Li - 9 East - Group

Display Group	Birth Date	Name	DD	MM	YYYY	Gender - Rank	Elements	Trigram	Birth
Group 1	1	Herlmut Berger	5	2	1959	Father	Earth	Earth	
	2	Petra Berger	29	9	1962	Mother	Wood	Water	



Input of house and personal data:
 The visual display of facing and door direction allows the user to immediately control the input of the house directions.

In addition to the facing and door directions a third directional input allows rotating the compass. It offers the opportunity to match the display to the true direction of the scanned plan. Any alternative calculation for sitting and facing can be calculated and shown in a very short period of time.

The example shows a situation where the plan direction is 180° - South direction is on top. The Bazhai calculator shows a "Li" house. The same result is calculated if the program shows North on the top.

The standard sheet for plans consists of 9 concentric rings which contain different, user definable information. Menus on the side of the sheet allow the selection of several options and thereby customizing the appearance of the rings. In the example the rings display:

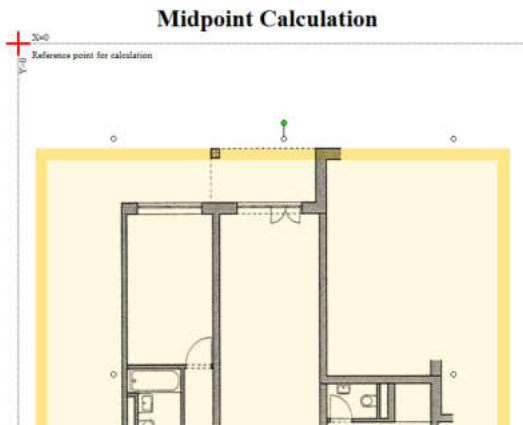
- Bazhai house energy level
- trigrams of the later heaven
- sitting and facing directions
- dangers of the year with grand duke, yearly star 5 (yellow 5) and 3 killings.

You may also add on top of the automatically centered floor plan a rectangular grid, which in this case displays the information of the 3-door Bagua.

A multitude of menus allow the user to adjust the content of the display interactively until an ideal combination of information is found to inform the client. The guideline "Less is More" serves well in this stage of preparation.

A legend at the bottom of the page keeps a current status of all information displayed.

A breakdown into small steps helps to learn easily the import of scanned plans. Corrections are possible at all times. Even the center of sharp or rounded buildings can be calculated without difficulties.

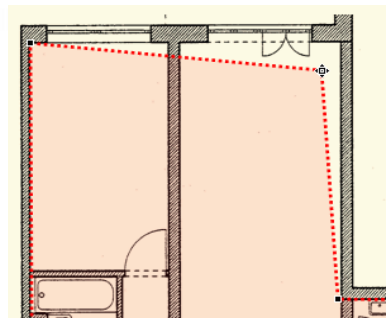


Alternative Title:

Step 1: Import plan (necessary)
Use the command button with the house on the left to import a previously scanned floor plan and adjust automatically. As an alternative you may import the plan directly from the scanner without saving as a file. Use the command button with the scanner on the left. Both commands will scale the selected plan to the appropriate width and hide the white background. You should be able to see the yellow area on this sheet.

Step 2: Correct/ draw plan
If you cannot see the yellow background through the floor plan, use the pencil button on the left to select the color white (there should be only one more - black) and transform it into transparent. If that fails scan again and pay attention to scan with the setting black/white or line drawing. The command with two angles allows you to "cut off" unnecessary areas around the imported plan. A good plan size for the plan is indicated by the yellow area. You may draw a floor plan with the EXCEL drawing tools. Choose the helpful fine grid for this page with the command to the left. Use the "Alt" key when drawing to default to only vertical and horizontal lines.

Step 3: Trace area of house/ apartment (necessary)
Show the outline of your floor plan with your mouse in order for the program to calculate the exact midpoint. The command button on the left will change the shape of your mouse pointer into a small cross. Start at one corner of your plan with a SHORT left mouse click. You will see that a rubber band is now attached to the last point. Follow the outline of your plan and finish the input by clicking as close as possible to the starting point. The function will be stopped and your plan will be outlined in red with red shading.



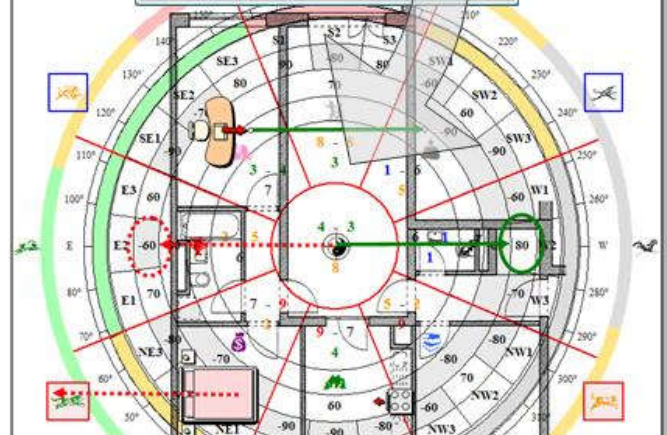
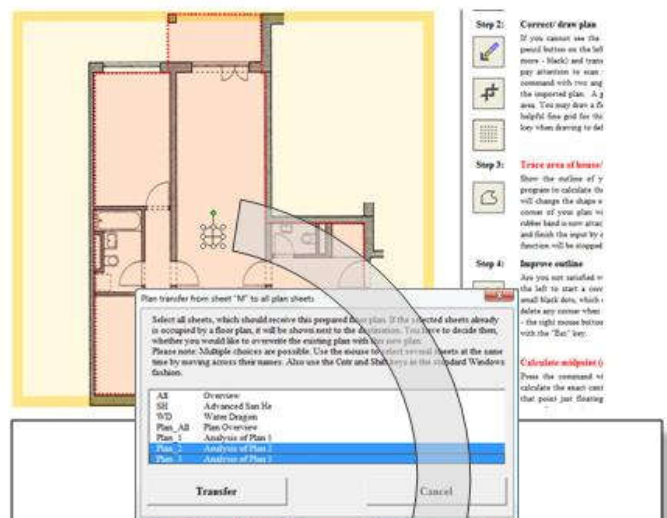
Correction of circumference

The transfer of the plan onto sheets for analysis is accomplished automatically. For the placement of the floor plan the Feng Shui program offers a popup menu which shows all available plan sheets and also marks the ones which have already received plans before.

In addition to pie charts the user may choose to use rectangular charts for floor plan analysis. In this case a 3-door Bagua display is adjusted to show the career sector in the West. Also available in the grid shape are information about Flying Stars, Bazhai and the 8 trigrams of the later heaven.

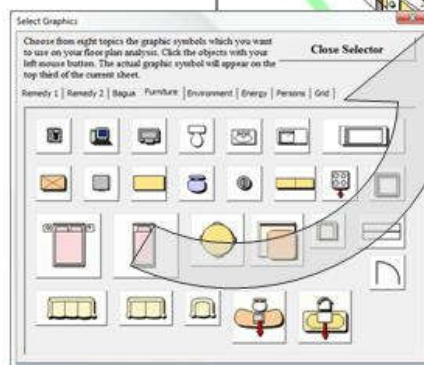
Legend: please refer to legend and choice of Penetr.

Signify the direction	SF	S	SW
Ring 1	4-3 / 7 (-70)	8-8 / 3 (-80)	6-1 / 5 (-60)
Ring 2	E 5-2 / 6 (-60)	Center 3-4 / 8	W 1-6 / 1 (-90)
Ring 3	NE 9-7 / 2 (+90)	N 7-9 / 4 (-90)	NW 2-5 / 9 (-70)
Ring 4			



A wide variety of graphic objects are available to enhance the information on floor plans. Cures, interiors, even persons with their elements can be placed onto the plan with the help of an easy to use menu. It offers:

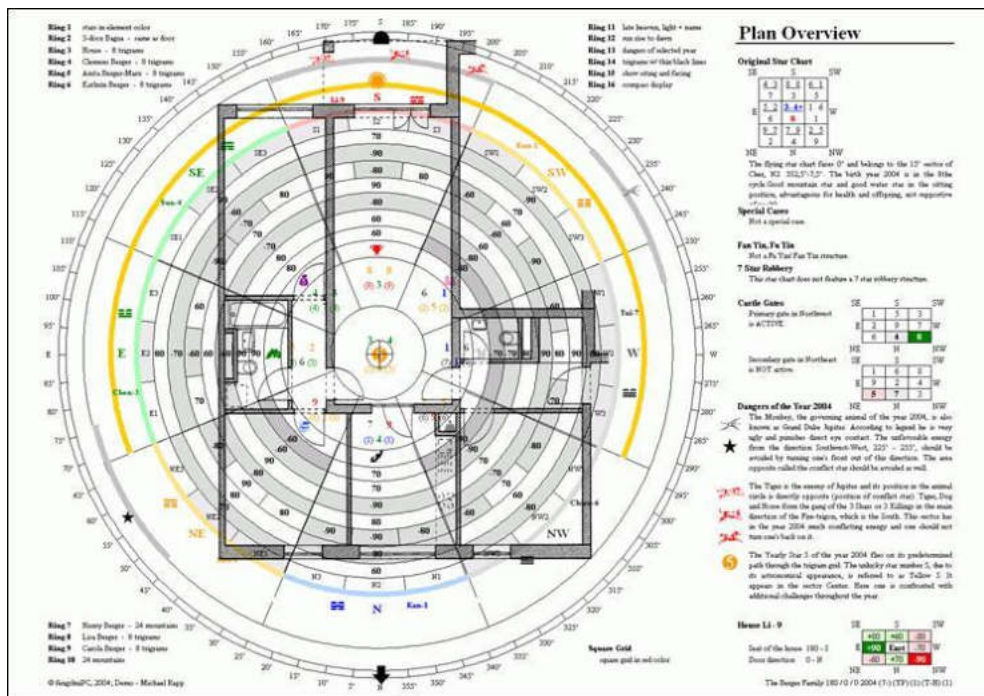
- Cures (2x)
- 8 life situations
- interiors
- environmental features
- earth energies
- people
- grid patterns.



- Ring 7: compass display
- Ring 8: show siting and facing
- Ring 9: animals - relations according to door direction
- Ring 10: trigrams w/ thick red lines
- Square Grid: direction - stars - Bazhai in color
- Display of House

A large sheet (A3 or 11/17) has been introduced to offer more space for a very exacting Feng Shui analysis. It is set up for printing on smaller printers with overlapping areas to be taped together. The information is located in concentric rings and each setting is individually adjustable. The sheet allows seeing together at one glance:

- Flying Stars
- Bazahi for the house
- Bazahi 6 people individually
- Early and late heaven
- Animal constellation
- Sunlight distribution
- Compass
- Dangers of the year with
- Grand Duke
- conflict star
- 3 killings
- Yellow 5



A very accurate assessment of the Flying Stars offers an additional sheet: Using the principle of host and guest the table compares element relationship, timeliness and quality of water, mountain, period and yearly stars. It helps to recognize quickly but with much depth, whether this trigram is best used as an active Yang) or passive (Yin) space. In addition the sheet offers information about Castle Gates, usage period, Fan/Fu Yin structures and special combinations.

Useful Lifespan

The useful lifespan for any building is calculated to that date, at which the reigning period star is imprisoned in the center palace (primarily as the water star). The mountain star has its useful lifespan of 140 years until 2143. The water star has its useful lifespan of 60 years until 2063.

Castle Gates

Primary gate in Southeast is ACTIVE. Secondary gate in Southwest is NOT active.

Fan Yin, Fu Yin

Not a Fu Yin/ Fan Yin structure.

7 Star Robbery

The 7 star robbery offers the possibility to vitalize the center of a building with energy from outside through star chart relationships. The floor plan needs to have an open layout between the effected three trigrams. This chart features: Li (Chien - Chan) robbery.

Original Star Chart

SE	3	4	8	8	1	6
S	7	3	5			
SW	2	5	4+3	6	1	
E	6	8		1		
W	7	9	9	7	5	2
NE	2	4	9			
N						
NW						

Replacement Star Chart

SE	5	3	1	7	3	5
S	7	3	5			
SW	4	4	6+2	8	9	
E	6	8		1		
W	9	8	2	6	7	1
NE	2	4	9			
N						
NW						

The flying star chart faces 173° and belongs to the 15° sector of Wu, S2 172,5°-187,5°. The birth year 2004 is in the 8th cycle. Neither good mountain star in the sitting position nor good water star in the facing position. Special case with replacement star.

See the original and the replacement Flying Star chart side by side.

Southwest

Li - 9

House Berger

Introduction

Entry of House and Personal Data

Overview

Bazhai - Directional Qualities

Bazhai 1 - Directional Qualities

Bazhai 2 - Elements

Space Analysis 1 - Bazhai

Flying Stars - Basics

Flying Stars 1 - Star Numbers

Flying Stars 2 - Interpretation

Flying Stars 3 - Analysis

Flying Stars 4 - Star Count

Advanced San He

Water Dragon

Water Dragon

Midpoint Calculation

Plan Overview

Analysis of Plan 1

Analysis of Plan 2

Analysis of Plan 3

Conclusion

16.12.2007

fengshuiPC
Munich
mail@fengshuiPC.de

© fengshuiPC, 2004; Demu - Michael Rapp

House Berger: 180 / 180 / 173 2004 (5-7)P (1) (7-6) (6)

An automatic table of content on the title sheet and sheets for comments and pictures add to the overall easy to use of the Feng Shui consultation package.